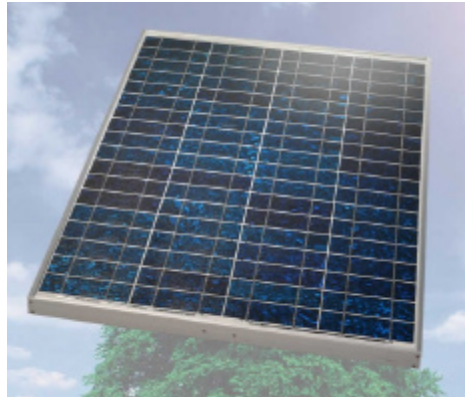


Technical Description



Photovoltaic Module KC80-02

Product Code: 12120



72 polycrystalline Si solar cells

Main application: general purpose PV use

Module Electrical Performance under Standard Test Conditions

Refers to standard test conditions of 1000 Wm⁻² solar irradiance, 25°C cell temperature, Air Mass 1.5.

Note: Maximum power point is subject to +10%/-5% variation. All other values are typical and for guidance only.

Maximum Power Point: 80 Watts, 4.73 Amps at 16.9 Volts.

Short Circuit: 4.97 Amps. Open circuit: 21.5 Volts.

Dimensions and Weight

all dimensions +/- 2mm, weight approximately +/-0.1kg

Length: 1007mm. Width: 652mm. Thickness at edge: 36mm. Weight: 8.3kg

Construction

Top cover material: low iron tempered glass 3.2mm

Rear cover material: PVF/PET

Encapsulant (lamination material): EVA

Frame: anodised aluminium

3 factory-fitted bypass diodes

1 junction box type K1

thickness with junction box 56mm

Integral mounting holes

Along length: 949mm centre to centre, 29mm centre to module edge.

10 holes, size 7mm.

Across width: 613mm centre to centre, 19.5mm centre to module edge.

Cell circuit

Cut from full size cells into 1/3 of a cell

Cell dimensions: Length (tab direction) 50mm. Width: 155mm.

Electrical circuit: 36 cells in series, 2 cell strings in parallel

Cell layout: 4 rows, each row is 18 cells long.

Normal Operating Cell Temperature (NOCT)

47°C *error in measurement around +/- 2°C*

Cell temperature at 800Wm⁻² solar irradiance, 20°C ambient temperature, wind speed <=1ms⁻¹, free air access to rear.

Efficiencies based on Standard Test Conditions Rating

Module: 12.2%

Laminated area: 12.3%

Cells alone: 14.3%

Note: Standard Test Conditions efficiency figures should only be used to compare one module with another. These efficiency figures do not apply to actual field performance, for which a careful analysis of operating conditions is necessary to determine the effects of module temperature and other factors.

Specifications may change due to Naps policy of continuous product improvement.

Please check current specification before purchasing.

Information last updated: 23-Nov-04